

Name: _____

Converting Vertex Form to Standard Form Homework

Write the quadratic function in standard form.

1. $Y = (x - 2)^2 + 6$

2. $Y = -2(x + 1)^2 + 3$

2. $Y = 3(x - 3)^2 - 12$

4. $f(x) = -2(x + 4)^2 - 4$

5. $f(x) = -(x - 6)^2 + 1$

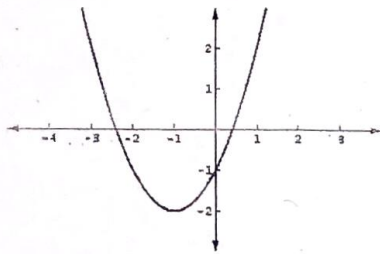
6. $f(x) = -(x + 2)^2 + 2$

Name: _____

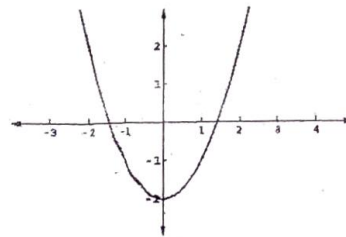
Teacher: _____

Block: _____

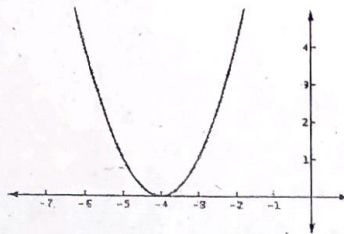
Match the quadratic function with its graph.



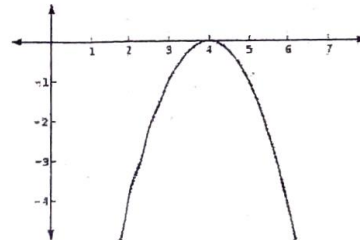
(a)



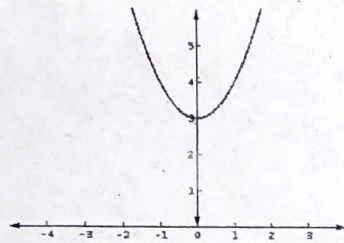
(b)



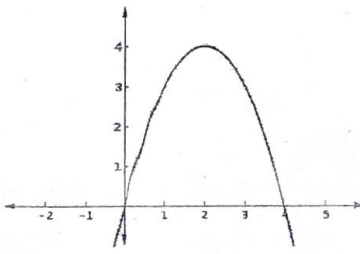
(c)



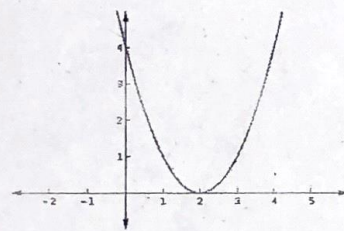
(d)



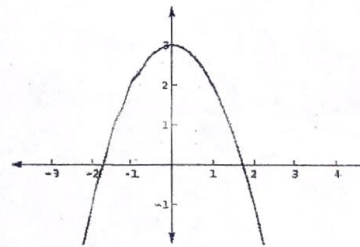
(e)



(f)



(g)



(h)

1. $f(x) = (x - 2)^2$

2. $f(x) = (x + 4)^2$

3. $f(x) = x^2 - 2$

4. $f(x) = 3 - x^2$

5. $f(x) = 4 - (x - 2)^2$

6. $f(x) = (x + 1)^2 - 2$

7. $f(x) = x^2 + 3$

8. $f(x) = -(x - 4)^2$